

103 East 300 North  
Manti, Utah  
\$359,000



## Historic Treasure

Step back in time and enjoy the peacefulness of historic Manti Utah. Completely restored and professionally decorated, this 1850's pioneer home is a work of art. Every detail is a delight from its rustic stone exterior with inviting front porch to its warm interior complete with 4 fireplaces and gently added modern amenities. It is truly the best of the past and present. A split-rail fence defines a picturesque .25 acre corner lot with flag stone patios, gardens, fruit trees and a mountain view. At night, a beautiful image of the illuminated Manti Temple is a reminder of the rich heritage of the area. A recent 2-car garage complete with workshop, was designed with a loft complementing the period architecture of the home. The guest house is absolutely charming with its own front porch, bath and heat. This is a unique opportunity to live the legend.



Jenni Thompson

801-209-9471 *Mobile* ■ 801-582-4667 *Office*  
jenni@jennithompson.com ■ www.thegroupslc.com

# Comfortable & Inviting!

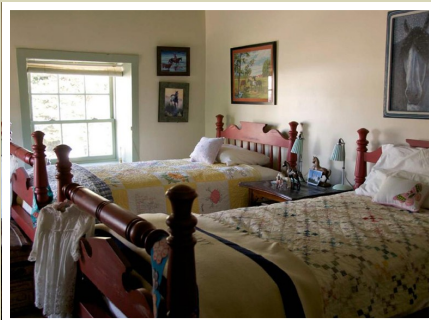
Main Home—1,900 Square Feet—3 Bedrooms & 2 1/2 Bathrooms

Guest House—400 Square Feet—1 Bedroom & 1 Bathroom

Quality Detailing—

Hardwood & Tile Floors, 4 Fireplaces, Gas Logs, French Doors, Crown Moldings,  
Ceiling Fans, Vaulted Ceiling, Soft Designer Colors, Low VOC Finishes

Alarm System, Gas Heat, Central Air, Instant Hot Water, Cable Available



Fabulous Country Kitchen—Painted Wood Cabinets with Display Doors &  
Open Shelves, Silestone Countertops & Porcelain Farmhouse Sink  
Refrigerator Included plus High-End Wolf & Asko Appliances

Traditional Fireplaces, Crown Moldings & Hardwood Floors Enhance the  
Timeless Living Room, Formal Dining Room & Main Floor Den/Bedroom  
Three-Quarters Bathroom & Convenient Laundry on Main

Wooden Staircase Leads Upstairs Where 4th Fireplace, His/Her Closets  
& Vaulted Plank Ceiling Accent the Comfortable Master Bedroom  
Wonderful Full Bath with Steam Shower & 1" Tile Floor Opens to Private Covered Deck  
2nd Bedroom & Half Bath Complete the Upper Level  
Basement Provides Utility Space

Mature .25 Acre Corner Lot, Automatic Sprinklers, Garden Shed  
Pressure Irrigation Water Available  
Detached 2-Car Garage with Workshop, Loft & Opener



*Square footage and lot size which are provided as a courtesy are approximate. All other information contained herein was supplied by the seller. It is the buyer's responsibility to verify all information.*



[www.thegroupslc.com](http://www.thegroupslc.com)