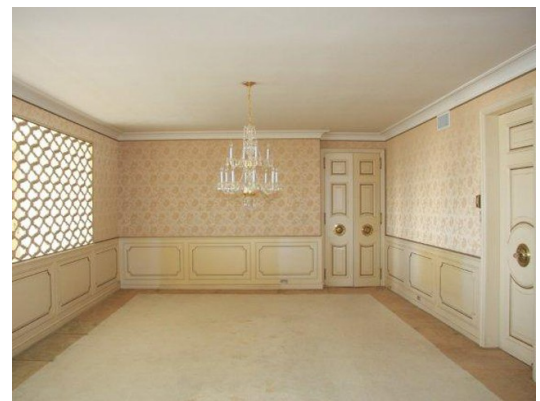


the group

REAL ESTATE, LLC

1235 East 200 South #1001
Wasatch Towers—Salt Lake City, Utah
\$789,000



Ginny Bostrom

801-209-0312 *Mobile* ■ 801-582-4667 *Office*
ginny@thegroupslc.com ■ www.thegroupslc.com

Extraordinary Wasatch Towers Penthouse!

Entire Top Floor of the Building
Unobstructed 360 Degree Views from Large North & South Terraces
This is the First Time this Luxury Condominium has been on the Market
5,486 Square Feet—3 Bedrooms & 3 1/2 Bathrooms
Formal Entry, Carpet, Hardwood & Marble Floors, Plantation Shutters, Fountain,
Wainscoting, Sliding Glass Doors, Crown Moldings, Ceiling Fan, Skylights
Alarm System, Gas Heat, Central Air Conditioning, Wired for Cable, Elevator



Gourmet Kitchen—Custom Cabinets, Granite Countertops, Appliances Include Refrigerator
Fabulous Central Work Island has Stainless Steel Countertop with Built-in Sink
Double Wall Oven, Butler's Pantry & Oversized Storage
Elegant Formal Dining Room with Wainscoting & Crystal Chandelier
Exquisite Formal Living Room is Detailed with Wainscoting, Marble Gas Fireplace & Crystal Chandelier
Picture Windows Frame City & Mountain Panoramas in Every Room
Spacious Family Room Includes Built-in Wet Bar with Refrigerator & Elegant Marble Water Feature
Sliding Glass Door Lead to Expansive Terrace Taking Full Advantage of the Breathtaking Views
Green Marble Gas Fireplace Details the Private Den/Office
Luxurious Master Suite Features Huge Walk-in Closet & Opens to Wonderful Terrace
Opulent Marble Master Bath is Enhanced with Gold Sherle Wagner Fixtures
2 Additional Large Bedrooms plus Full & Three-Quarters Bathrooms
Convenient Half Bath & Laundry Including Washer & Dryer Complete the Floor Plan
Secure Building with 3-Car Built-in Heated Garage Space



Square footage and lot size which are provided as a courtesy are approximate. All other information contained herein was supplied by the seller. It is the buyer's responsibility to verify all information.



www.thegroupslc.com